



## CONTACT INFORMATION

206.328.2442

INFO@BLUERIBBONCOOKING.COM

## ONE OF SEATTLE'S MOST ELEGANT VENUES

Located just minutes from downtown, the Seattle Design Center offers a luxurious venue with vaulted wood beam ceilings, abundant natural light streaming through skylights, and stunning architectural details. Experience elegance and sophistication in every corner.



## WEDDINGS | CORPORATE EVENTS | HOLIDAY PARTIES

Whether you are planning a wedding, holiday party, or corporate event, the Seattle Design Center is the perfect backdrop for your celebration.

### VENUE CAPACITY

- Atrium: Up to 899 standing | 500 seated
- G2: Up to 500 standing | 200 seated

### RENTAL INCLUSIONS

- 10 hours included with venue fee
- 30 round tables (72" seats 10)
- 300 black Chiavari chairs
- 8 cocktail tables
- 500 parking spaces
- Janitor, security & event manager on site
- Building accessible after 5pm (Mon-Fri)



## CONTACT INFORMATION

206.328.2442

INFO@BLUERIBBONCOOKING.COM

## VENUE RENTAL RATES

The Seattle Design Center offers a variety of options that will delight your guests. Each space offers a unique design!

### ABOUT THE ATRIUM

This grand space offers a beautiful open area with a sweeping staircase, vaulted ceilings with skylights, and notable architectural accents.

- SDC Atrium Sun - Fri | \$9,500
- SDC Atrium Saturdays | \$10,500



### ABOUT G2

Entering into G2, your guests will be impressed by the modern elegance, high ceilings, and open spaces. Explore the signature game room!

- SDC G2 | \$7,500





## CONTACT INFORMATION

206.328.2442

INFO@BLUERIBBONCOOKING.COM

## VENUE RENTAL RATES

### GETTING READY SUITE

With sparkling chandeliers, full length mirror, and ample space, this beautiful suite offers you a place to get ready.

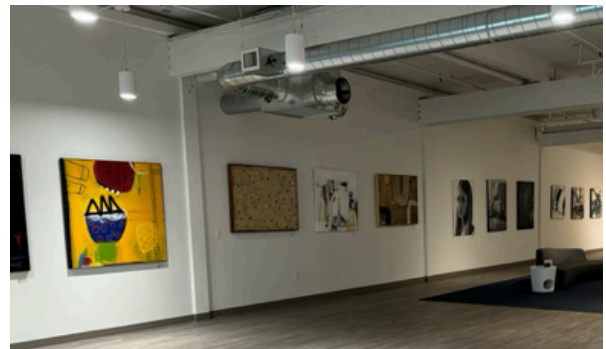
- Wedding Suite \$250



### GRAY SKY GALLERY ROOM

Enjoy a beautiful gallery space for your next event. This flexible room can be added to a rental.

- Gray Sky Gallery Room \$3,500



### ABOUT THE SKY BRIDGE

Imagine your cocktail hour, wedding ceremony, or company event under the stars!

- Sky Bridge \$1,000



### SHOWROOM SUITE 100

For a limited time, enjoy this beautiful showroom with stunning natural light.

- Showroom Suite 100: M-F \$5,500, Sat \$7,500, Sun \$6,500 or added to Atrium Rental for \$3,500





## CONTACT INFORMATION

206.328.2442

INFO@BLUERIBBONCOOKING.COM

# CATERING

Seattle Design Center has a list of select caterers you may choose from when serving food at your event. These caterers have knowledge and experience in the Design Center environment, and their working procedures have been approved, ensuring a more seamless event experience. You may contact them directly for sample menus and proposals.

Outside catering off this list may be allowed for an additional fee. Corkage fees apply for alcohol brought into the venue.



## Blue Ribbon

206.328.2442

info@blueribboncooking.com



# SDC SEATTLE DESIGN CENTER

