

# SDC SEATTLE DESIGN CENTER

## CONTACT INFORMATION

206.328.2442

INFO@BLUERIBBONCOOKING.COM

## ONE OF SEATTLE'S MOST ELEGANT VENUES

Located just minutes from downtown, the Seattle Design Center offers a luxurious venue with vaulted wood beam ceilings, abundant natural light streaming through skylights, and stunning architectural details. Experience elegance and sophistication in every corner.



## WEDDINGS | CORPORATE EVENTS | HOLIDAY PARTIES

Whether you are planning a wedding, holiday party, or corporate event, the Seattle Design Center is the perfect backdrop for your celebration.

### VENUE CAPACITY

- SDC Atrium: Over 1000 standing | 500 seated
- G2 Atrium: Up to 500 standing | 200 seated

### RENTAL INCLUSIONS

- 10 hours included with venue fee
- 30 round 72" tables (each seats 10)
- 300 black Chiavari chairs
- 8 cocktail tables
- 500 parking spaces
- Janitor, security & event manager on site





## CONTACT INFORMATION

206.328.2442

INFO@BLUERIBBONCOOKING.COM

## VENUE RENTAL RATES - THE ATRIUMS

The Seattle Design Center offers a variety of options that will delight your guests. Each space offers a unique design!

### ABOUT THE SDC ATRIUM

This grand space offers a beautiful open area with a sweeping staircase, vaulted ceilings with skylights, and notable architectural accents.

- SDC Atrium Sun - Fri | \$9,500
- SDC Atrium Saturdays | \$10,500



### ABOUT THE G2 ATRIUM

Entering into G2, your guests will be impressed by the modern elegance, high ceilings, and open spaces. Explore the signature game room!

- SDC G2 | \$7,500







## CONTACT INFORMATION

206.328.2442

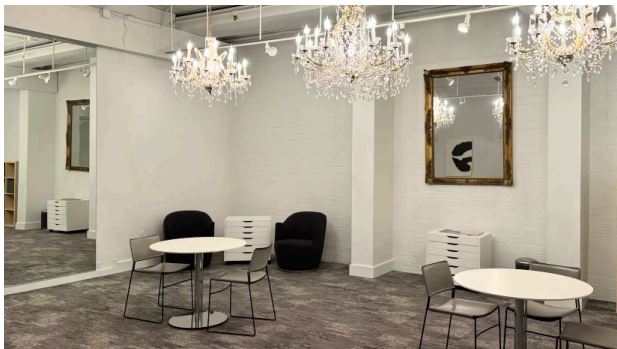
INFO@BLUERIBBONCOOKING.COM

## VENUE RENTAL RATES

### GETTING READY SUITE

With sparkling chandeliers, full length mirror, and ample space, this beautiful suite offers you a place to get ready.

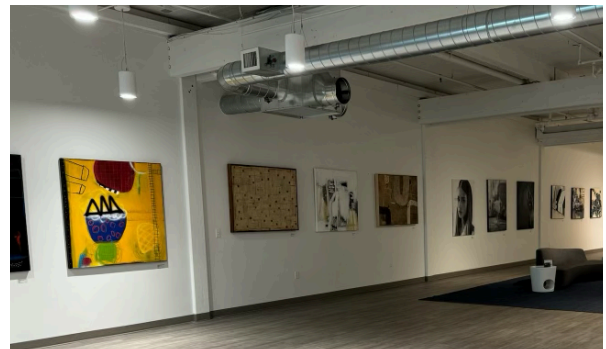
- Wedding Suite \$250 with atrium rental



### GRAY SKY GALLERY

Enjoy a beautiful gallery space for your next event. This flexible room can be added to a rental.

- Gray Sky Gallery Room \$3,500



### THE SKY BRIDGE

Imagine your cocktail hour, wedding ceremony, or company event under the sun or stars!

- Sky Bridge \$1,000



### SUITE 100

For a limited time, enjoy this beautiful showroom with stunning natural light and intimate architectural spaces.

- Suite 100: M-F \$5,500,  
Sat \$7,500, Sun \$6,500  
or added to Atrium Rental for \$3,500





## CONTACT INFORMATION

206.328.2442

INFO@BLUERIBBONCOOKING.COM

# CATERING

All licensed and insured caterers are welcome!

The Seattle Design Center has approved caterers, listed below, you may hire without paying an outside catering fee. These caterers have knowledge and experience in the SDC environment, and their working procedures have been approved, ensuring a more seamless event experience. You may contact them directly for sample menus and proposals.

Our fees for other outside caterers range from \$350 – \$1,050. Corkage fees apply for alcohol brought into the venue.

### **Blue Ribbon Cooking**

206.328.2442

info@blueribboncooking.com

### **Ravishing Radish**

206.860.7449

vickie@ravishingradish.com

### **Tuxedos & Tennis Shoes**

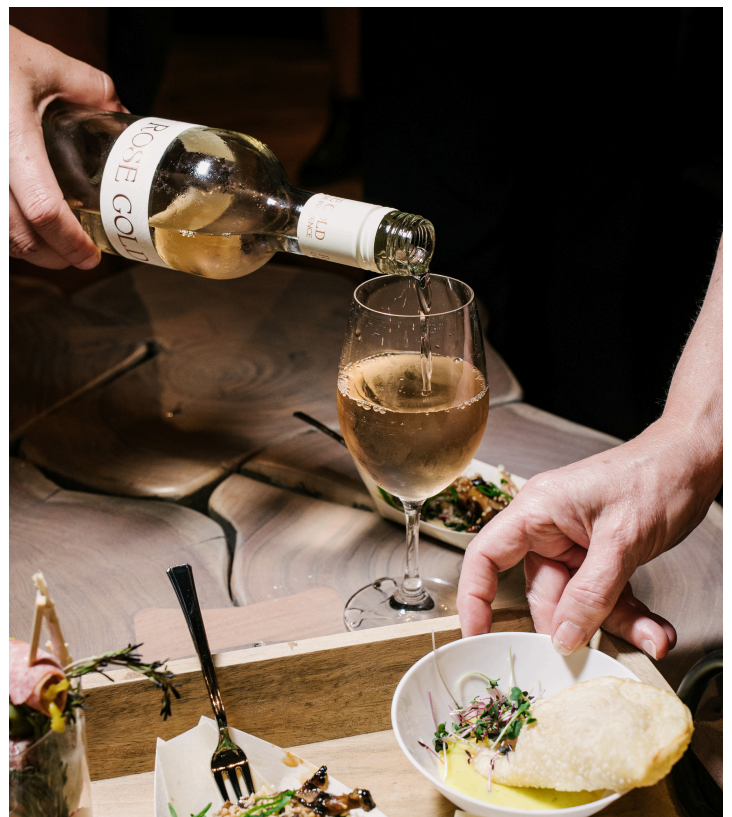
206.932.1059

emilys@dsquaredcompany.com

### **Act 3 Catering**

425.251.9102

www.act3catering.com





# SDC SEATTLE DESIGN CENTER

